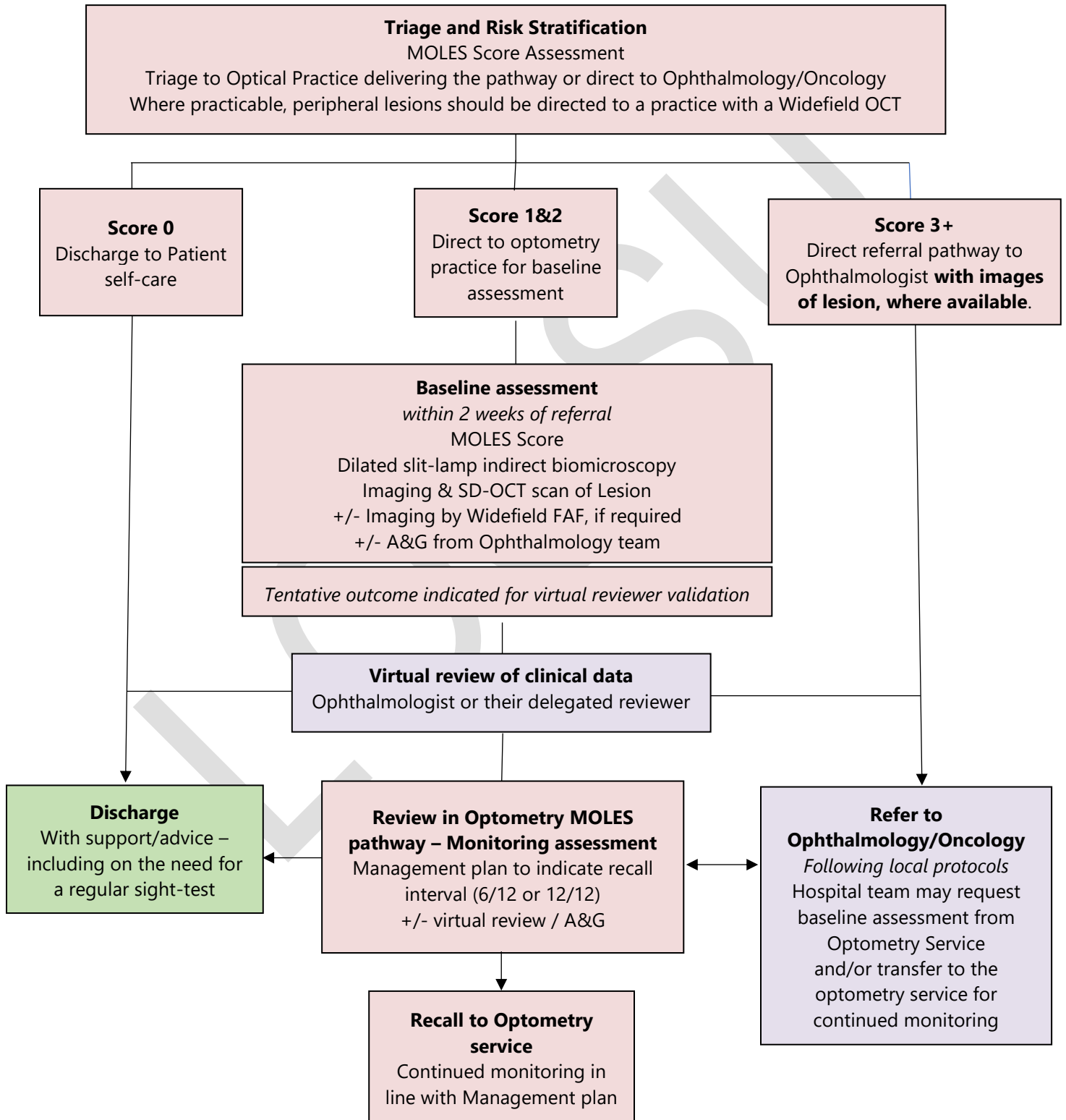


Naevus Referral Filtering & Monitoring Pathway Diagram



Service aim: To support the early identification of choroidal melanoma and deliver naevus monitoring, where required.

Entrance criteria: A suspicious naevus is identified at sight test (or within an extended primary eye care service). The service will also receive redirected referrals from other sources (e.g. general practice or secondary care) for baseline assessment and transfers from the hospital service for monitoring.



Results communicated back to Referrer, GP and Optometry service (Copied to the Patient).