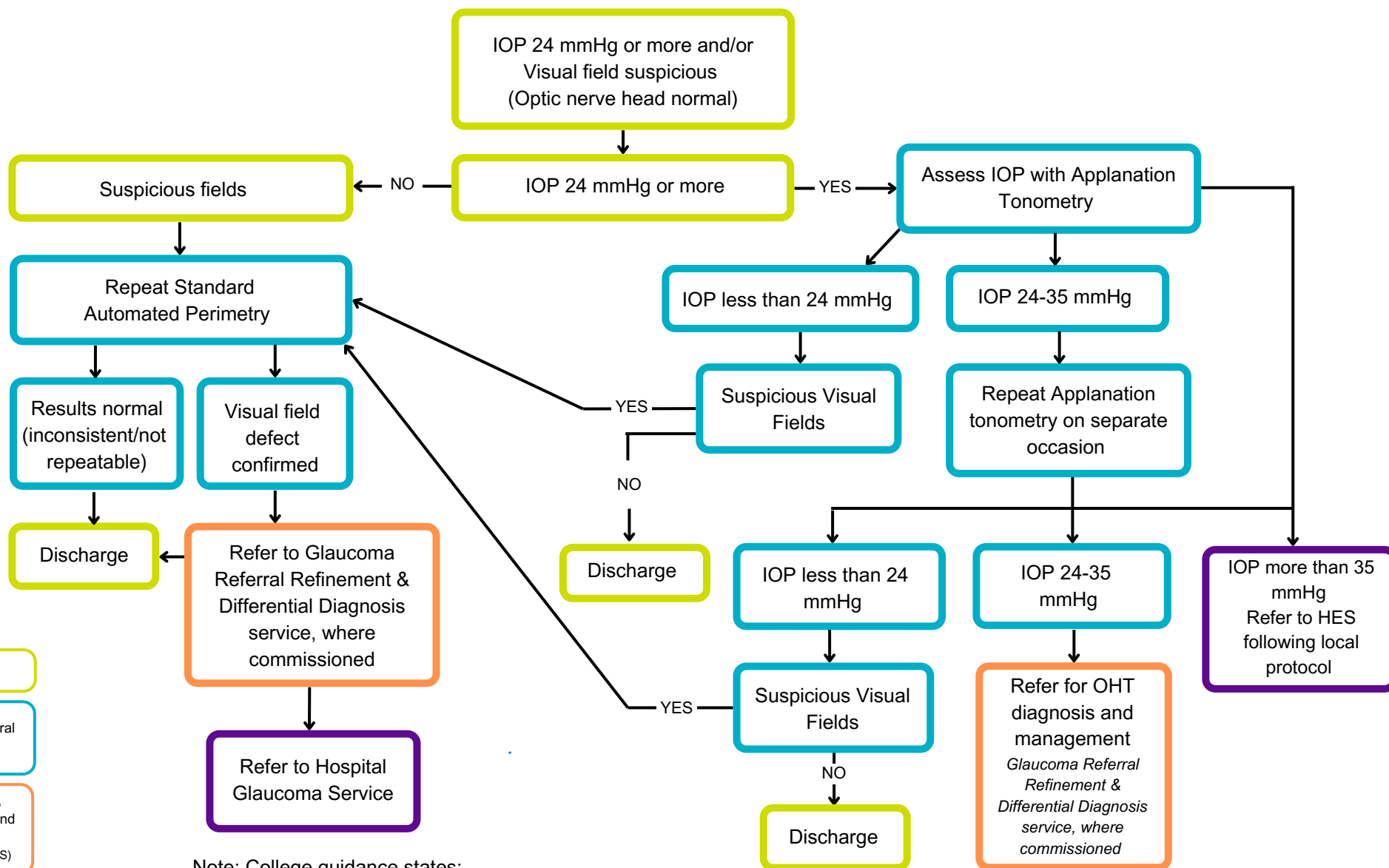


Glaucoma Repeat Measures Pathway

Entrance criteria: A raised IOP or suspicious visual field is identified during GOS or private sight test



Key

GOS/Core competency

Extended Primary Care / referral
filtering (Core Competency)

Extended primary eye care,
requires higher qualification and
relevant experience
(Care traditionally delivered in HES)

HES/Secondary Care
Ophthalmology led service

Note: College guidance states:

IOP over 35mmHg requires an urgent referral
IOP of 40mmHg or more requires an emergency referral.